

Digswell Lake

Digswell lake was completed in 1810 and provided a fine view with its ornamental planting, for those approaching Digswell House across the valley. Although it discharges into the Mimram just upstream of the viaduct, it was not connected to the river at the upstream end, and is spring-fed. Views from the ornamental parkland down to the water were enhanced with planting, much of which remains.



Lake discharging over weir into river Mimram



When the land was sold in 1919, the lake was leased to the local water bailiff who used it as a commercial lake, renting out rods for fly fishing and breeding trout to stock the lake.

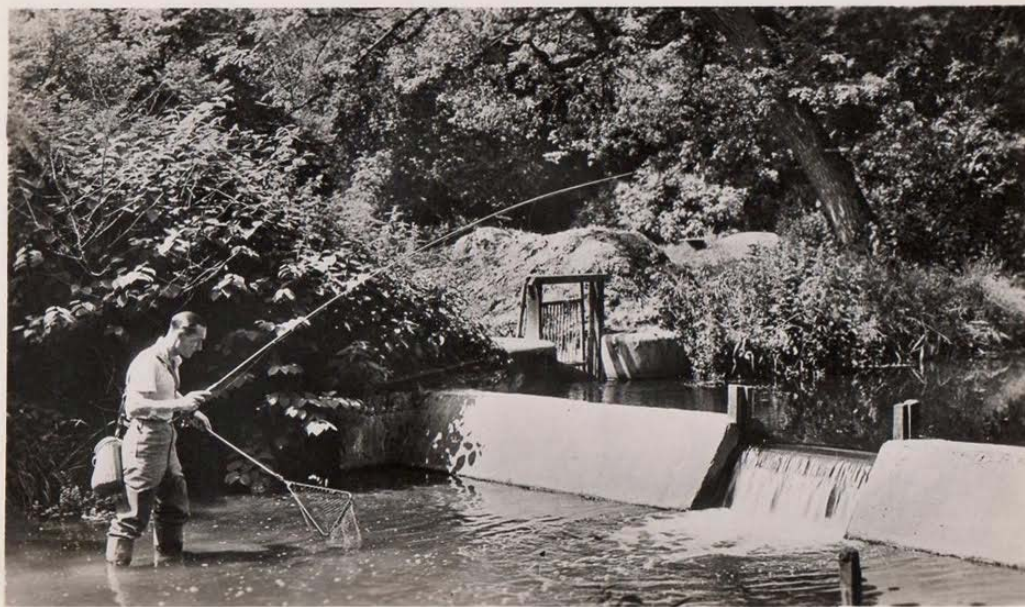


Photo "Studio Lisa" No.64.

DIGSWELL FISHERIES.

The Digswell Lake Society, formed in 1957, leased the lake and surrounding seventeen acres of ornamental parkland. The freehold was purchased in 1985 from the Commission for New Towns, which had taken over from the Welwyn Garden City Development Corporation. The lake is closed to the public but accessible to members of the Digswell Lake Society

Image courtesy of B. Curtis

Traces of the water management schemes still exist, with channels and holding ponds.

