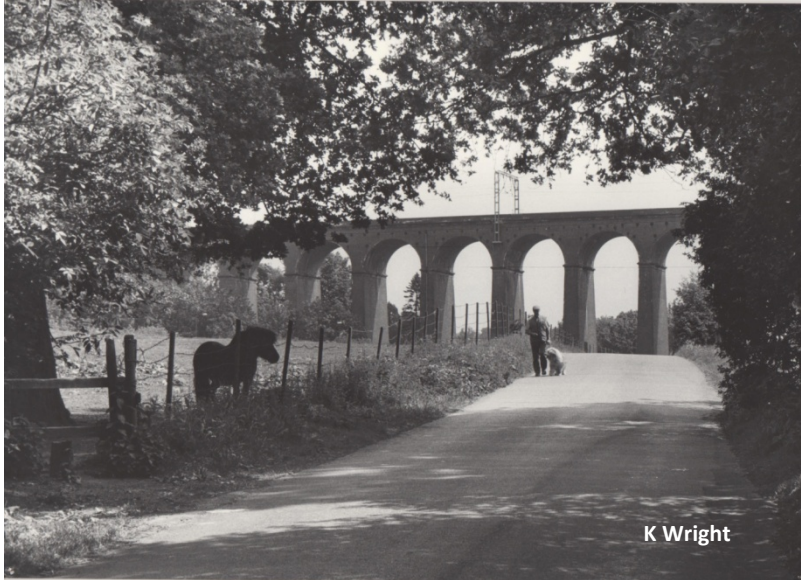


The Average Citizen going about his daily life need not seek the beauty of trees and flowers in some remote park

'Landscaping of Two Towns ' 1962 Welwyn and Hatfield Development Corporation



Digswell Park Road looking from the bridge over the river Mimram towards Digswell Village in 1990.

K Wright

The finger of Oakdale in the parkland valley with Temple Wood, laid out by Capability Brown at the end of the 18th century, to the left and the line of Monks Walk in the background to the right.



K Wright



K Wright

Children playing at Monkswood, in June 1969. This is part of the New Town phase laid out from the 1950s onwards but with ample green space and views northeast across the valley to the high ground round Harmer Green. This land was outside of the park pale and had been fields.